



AIR CONDITIONING



REFRIGERATION



HEATING

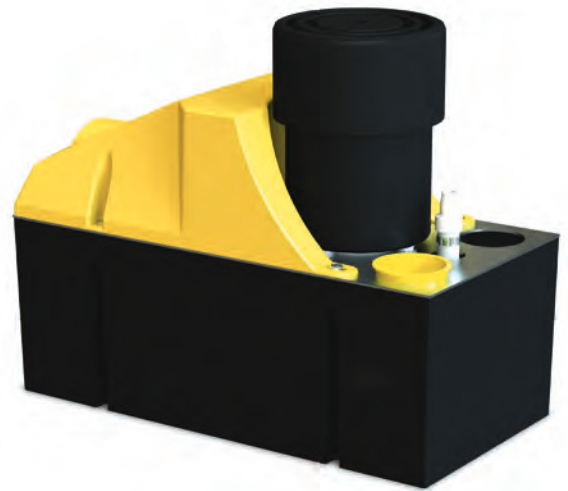


EN

heavy duty 6 & 10

CONDENSATE REMOVAL PUMP

With an impressive flow rate, these robust and reliable Heavy Duty pumps are perfect for the rapid removal of large quantities of condensate water.



HD6: 900L/h max. flow
HD10: 1070L/h max. flow



HD6: 7m max. rec. head
(low rate 180L/h)
HD10: 9m max. rec. head
(low rate 100L/h)

KEY FEATURES

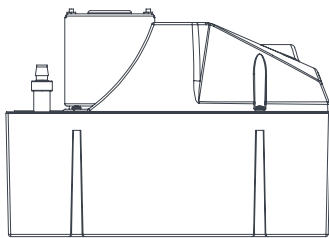
- High flow rate
- Non return valve
- Easy installation
- 4L tank capacity

SUITABILITY

- HD6: Up to 1200kW / 4m Btu/h
HD10: Up to 1460kW / 4.9m Btu/h
- Refrigeration cabinets; Dehumidifiers; Air handling units (AHUs)

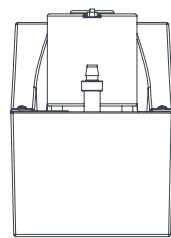


3.5 kg



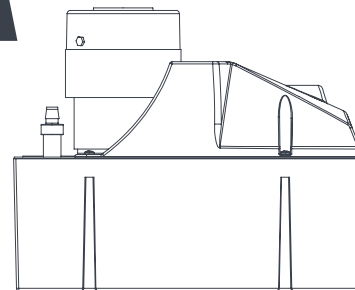
300mm

4.3 kg

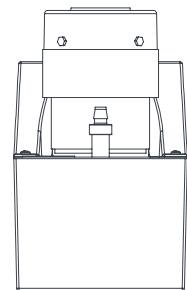


150mm

205mm



300mm

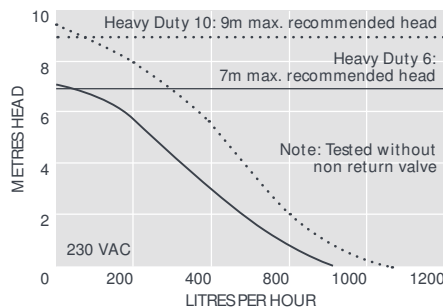


150mm

265mm

HEAVY DUTY 6 & 10 SPECIFICATIONS

Max. flow	HD6: 900L/h, HD10: 1070L/h
Max. rec. head	HD6: 7m, HD10: 9m
Tank capacity	4L
Sound level@1m	dB(A): HD6: 60, HD10: 64
Power supply	HD6: 230 VAC, 1.5A, 50Hz HD10: 230 VAC, 0.38A, 50Hz
Rated	HD6: Non continuous HD10: Continuous
Class	I appliance
Max. unit output	HD6: 1200kW / 4m Btu/h HD10: 1460kW / 4.9m Btu/h
Max. water temp	40°C / 104°F
Inlet/outlet	x2 40mm in, 10mm out
IP Protection	IP20
Safety switch	3.0A Normally closed



SUGGESTED XTRA ACCESSORIES

Description	Part No.
Pipe to Pipe connect or 21mm-40mm	FP2018
Tube To Soil Stack Adaptor	FP2038
Vinyl Tube Braided 3/8" (10mm)	AX5101

Xtra For more installation accessories take a look at our Aspen Xtra range

IN THE BOX

Heavy Duty 6 or 10 pump • 2m power cable
• Install manual

Download manual at aspenpumps.com

HEAVY DUTY 6 & 10 OPTIONS

Heavy Duty 6	FP2074/2
Heavy Duty 10	FP2066/2

Information correct at time of going to press.



aspenpumps.com

+44 (0)1323 848842

sales@aspenpumps.com

reliable | silent | simple